

FOR LEASE

# PREMIER OFFICE SPACE IN WHEATON

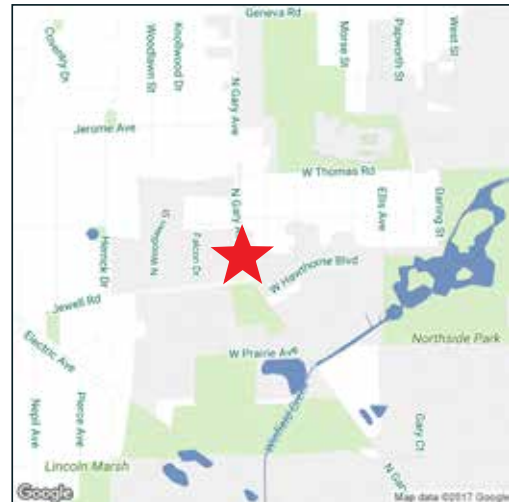
2001 N. GARY AVENUE  
WHEATON, IL 60187

Perfect for a Medical User



## PROPERTY HIGHLIGHTS

- + Available Size:  $\pm$ 2,778 SF
- + Space Includes:
  - Private Outdoor Balcony
  - Large Waiting Room
  - $\pm$ 6 Private Offices
  - $\pm$ 1 Conference Room
  - Private Restroom in Space
- + Ample Parking  $\pm$ 60 Free Spaces Available
- + Strategically located in Wheaton
  - $\pm$ 2 miles off of Downtown Wheaton
  - Minutes from North Avenue
  - Convenient Access to I-355N
- + Excellent opportunity to join a diverse mix of medical tenants



## CONTACT US

### THOMAS E. PETERS

Associate  
+1 630 573 7039  
thomas.peters@cbre.com

### NICHOLAS E. PETERS

Senior Vice President  
+1 630 573 7082  
nick.peters@cbre.com

[www.cbre.com/2001Gary](http://www.cbre.com/2001Gary)

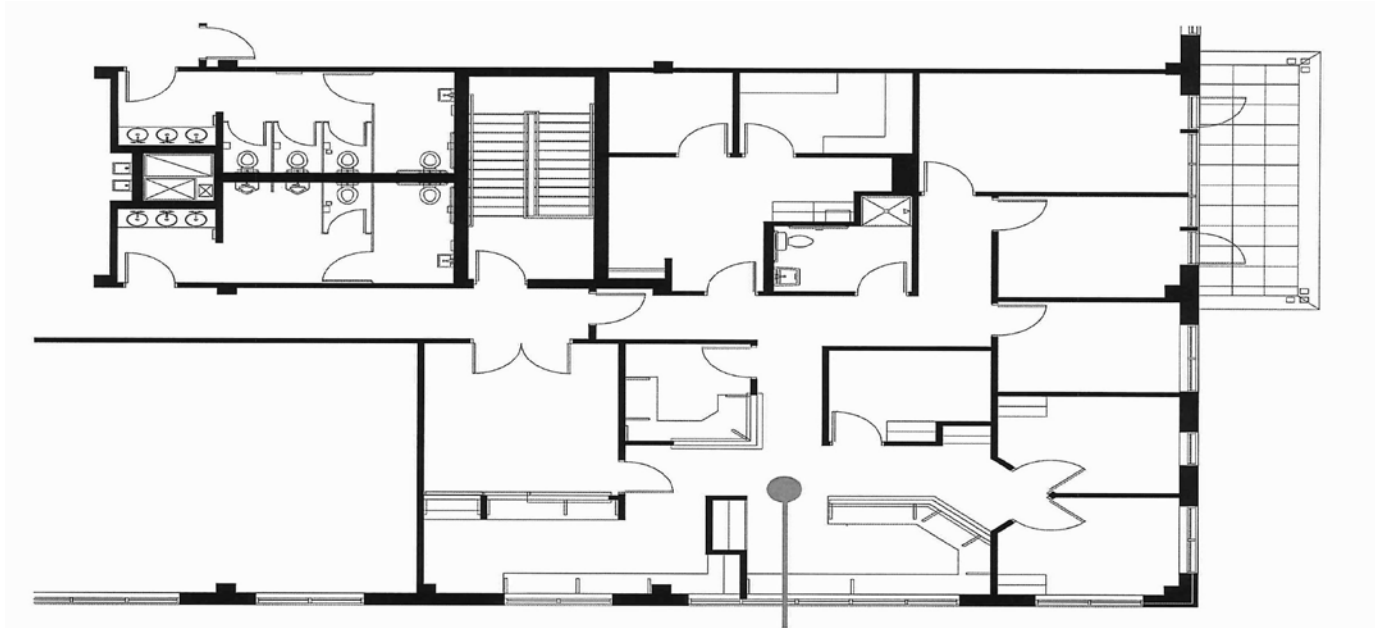
**MP**  
MedProperties

**CBRE**

FOR LEASE  
PREMIERE OFFICE SPACE IN WHEATON

2001 N. GARY AVE  
WHEATON, IL 60187

FLOOR PLAN &  
INTERIOR PHOTOS



[www.cbre.com/2001Gary](http://www.cbre.com/2001Gary)

**MP**  
MedProperties

**CBRE**